

ProFace X [TD]

Face & Palm Verification and Body Temperature Detection Terminal



ProFace X [TD] is a fully upgraded version of the ProFace product line, which is designed to deal with all kinds of scenarios. Powered by the ZKTeco-customized CPU for running the intellectualized engineering facial recognition algorithm and the latest computer vision technology, ProFace X [TD] supports both facial and palm verification with large capacity and rapid recognition speed, boosting the security performance in all aspects.

ProFace X [TD] also helps eliminate hygiene concerns; not only because of the contactless recognition technology it is equipped with, but also because of the new functions namely body temperature detection and masked individual identification.

The facial recognition capability has reached a new height in the biometrics technology industry with a maximum of 50,000 facial templates, recognition speed of less than 0.3 sec per face, and ultimate anti-spoofing ability against almost all types of fake photos and videos attack.

In addition, the 3-in-1 palm recognition (Palm Shape, Palm Print and Palm Vein) is performed in 0.35 sec per hand; the palm data acquired will be compared with a maximum of 5,000 palm templates.

As mentioned above, ProFace X [TD] can assist in reducing the risk of infection and germs spreading during the recent global public health issue as well. The enables fast and accurate body temperature measurement and masked individual identification during facial and palm verification at all access points, especially in hospitals, factories, schools, commercial buildings, airports, stations, and other public areas.

* **NOTE:** Palm verification is customized for customers.

Features

- Ultra-large capacity of facial templates for 1:N verification: 30,000 (standard); max. 50,000 (optional)
- Huge capacity of palm templates; 1:N - 5,000 palm templates (customized)
- Anti-spoofing algorithm against print attack (laser, color and B/W photos), videos attack, and 3D mask attack
- Intelligent energy-saving design; precisely evaluation of the distance (up to 2.5m (8.2ft)) between the user and the device by a microwave detector before waking up the recognition terminal
- 2MP starlight CMOS sensor camera with WDR function
- 8" touch screen with 400 lux, which offers high visibility under strong and direct light
- Wide range of working temperature (16°C ~ 32°C; 60.8°F ~ 89.6°F)
- Body temperature detection: measurement deviation of ±0.3°C; measurement distance of 30 – 50cm
- Mask detection; facial verification available with masks

* Facial verification for masked individuals will increase FAR. Palm verification for masked individuals is recommended.
 Temperature measurement data is for reference only, not for medical use.
 ProFace X [TD] is available for indoor environments without wind or direct sunlight.

Specifications (G: GL Exclusive Feature)

Capacity	
G Faces	30,000 (1:N) 50,000 (Optional)
Palm	5,000 (1:N) (Customized)
Users	50,000
G Transactions	1,000,000 2,000,000(Optional)
User Photos	10,000
Event Photos	10,000

Access Control Interface
Lock Relay Output
Alarm Output / Auxiliary Input
Exit Button / Door Sensor

Communication
TCP/IP
Wiegand Input / Output
Wi-Fi (Optional)
RS485 / RS232*

Compatibility
 Security Relay Box
 Wiegand / RS485 Slave Reader
 with FP / RFID / Barcode / QR-code
 ZKBioSecurity Software

- Special Functions**
- G 0.3s High Speed Facial Verification
 - Liveness Detection
 - HTTPS Communication Encryption (Optional)
 - G Event Snapshot

Additional Info
 Face Algorithm: ZKLiveFace5.8
 Palm: FAR ≤0.01%; FRR ≤1% (Customized)
 Working Temperature: 16°C ~ 32°C,
 (60.8°F ~ 89.6°F)
 Working Humidity: ≤93%
 Storage Temperature: -40°C ~ 65°C
 (-40°F ~ 149°F)
 Storage Humidity: ≤93%
 Net Weight: 853g
 Dimensions (H*L*D): 227*143*26.1mm

Hardware
 900MHz Dual Core Customized
 Computer vision CPU
 G 512MB RAM / 8G Flash
 G 8" High light (400lux) IPS Touch LCD
 G 2MP WDR Low Light Camera
 Adjustable Light brightness LED
 Hi-Fi Voice
 High Sensitivity Microphone
 Distance Detection Sensor
 Reset Button and Tamper Switch

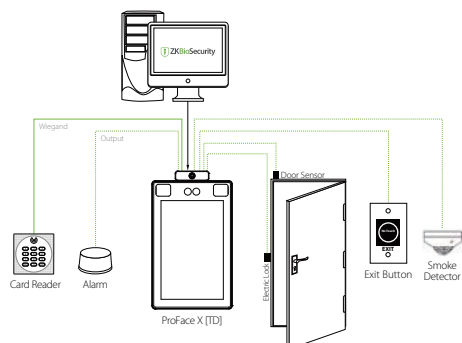
Standard Functions:
 Access Levels, Groups, Holidays, DST,
 Duress Mode (Password), Anti-Passback,
 Record Query, Tamper Switch Alarm,
 Custom Wallpaper & Screen Saver

Preventative Measures
 Mask detection
 Body temperature detection
 Temperature Measurement Distance:
 30cm~50cm (1ft~1.64ft)
 Temperature Measurement Accuracy: ±0.3°C
 Temperature Measurement Range: 34°C~45°C

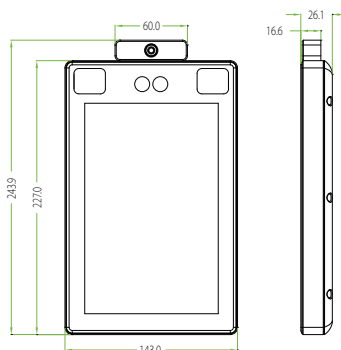
Power
 Operating Voltage: 12V DC
 Current Draw: < 2,000mA

* Note: RS232 is for external printer and RS485 is for RS485 readers.

Configuration



Dimensions (mm)



ZKTECO CO.,LTD.
 www.zkteco.com
 E-mail: sales@zkteco.com

Copyright©2024 ZKTECO CO., LTD. All rights reserved.
 V2.2 01/04/2024